

Low Power Linear Hall Sensor

XL47S

Features

- Wide Operating Voltage Range: 2.7V~8V
- Low Operation Current: 1.4mA
- Linearity: $\pm 4\%$
- Sensitivity: 2.3mV/Gs@V_{DD}=3.3V
- Low noise output without external capacitor filtering
- Temperature Grade 2: -40°C to 105°C Ambient Operating Temperature Range
- Device HBM ESD Classification Level Class2
- SOT23-3 package

Applications

- Game Handle
- Magnetic Axis Keyboards
- Liquid Level Detection
- Speed control turnbuckles

General Description

The XL47S is a linear Hall-effect sensor specifically engineered for game handle, featuring low power consumption, wide operating voltage, and extended temperature range, with an output voltage varies proportionally with the strength of the induced magnetic field, and its linear output voltage range follows the variation of the power supply voltage. The XL47S's output voltage without magnetic field defaults to half of the supply voltage, the chip's typical operating voltage is 3.3V, with low operation current. The operating temperature range supports -40°C~105°C.

The XL47S integrates high precision current source, temperature compensation module, Hall array, amplifier, driver module and other circuit modules, which provides high linearity and strong immunity to electromagnetic interference over the full voltage range and full temperature range.

Typical application schematic

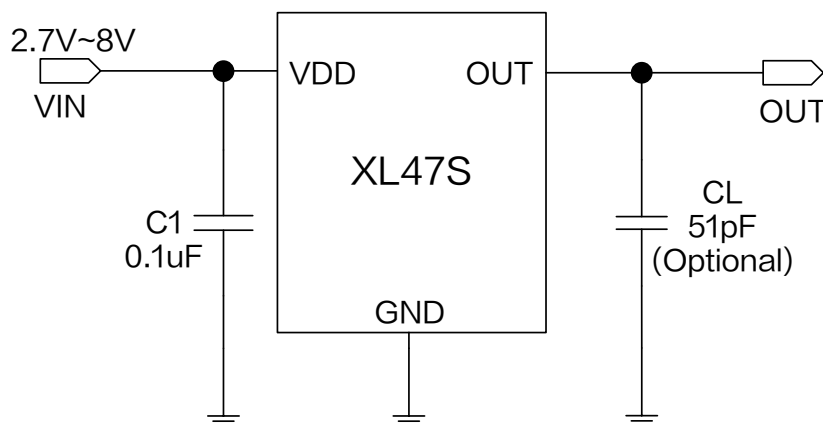


Figure1. XL47S Typical application schematic

Low Power Linear Hall Sensor

XL47S

Pin Configurations

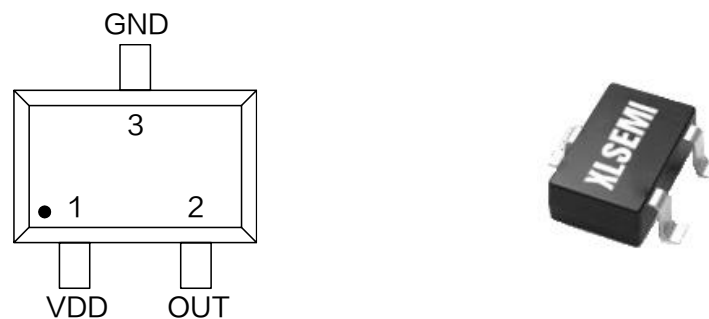


Figure2. Pin Configuration of XL47S

Table1.Pin Description

Pin Number	Pin Name	Description
1	VDD	Supply Voltage Input Pin. XL47S operates from 2.7V to 8V DC voltage.
2	OUT	Output Pin.
3	GND	Ground pin.

Ordering Information

Order Information	Marking ID	Package Type	Eco Plan	Packing Type Supplied As
XL47S	XL47S	SOT23-3	RoHS & HF	3000 Units Per Reel

Low Power Linear Hall Sensor

XL47S

Function Block

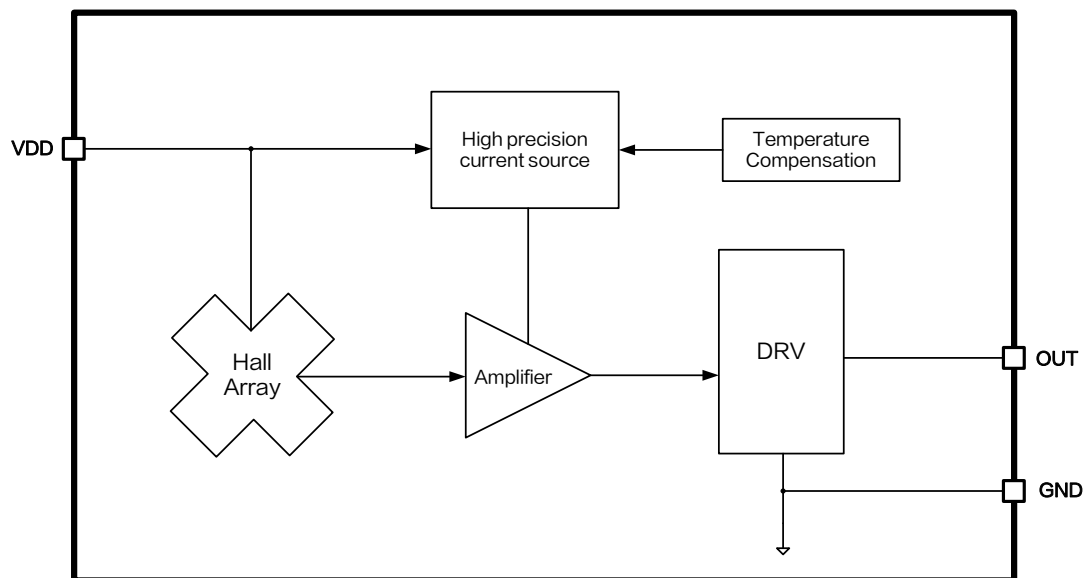


Figure3. Function Block Diagram of XL47S

Absolute Maximum Ratings (Note1)

Parameter	Symbol	Value	Unit
Input Pin Voltage	V_{DD}	-0.3 ~ 25	V
Output Pin Voltage	V_{OUT}	-0.3 ~ 25	V
Output Current	I_{OUT}	2	mA
Thermal Resistance(SOT23-3) (Junction to Ambient, No Heatsink, Free Air)	R_{JA}	200	°C/W
Operating Temperature	T_A	-40 ~ 105	°C
Operating Junction Temperature	T_J	-40 ~ 125	°C
Storage Temperature	T_{STG}	-65 ~ 150	°C
Lead Temperature(Soldering,10sec)	T_{LEAD}	260	°C
ESD(HBM)	—	≥2500	V

Note1: Stresses greater than those listed under Maximum Ratings may cause permanent damage to the device. This is a stress rating only and functional operation of the device at these or any other conditions above those indicated in the operation is not implied. Exposure to absolute maximum rating conditions for extended periods may affect reliability.

Low Power Linear Hall Sensor

XL47S

XL47S Electrical Characteristics (Note2)

$T_A = 25^{\circ}\text{C}$, $V_{DD}=3.3\text{V}$, system parameters test circuit figure1, unless otherwise specified.

Parameters	Symbol	Test Condition	Min.	Typ.	Max.	Unit
Operation Voltage	V_{DD}	–	2.7	3.3	8	V
Operation Current	I_{DD}	$V_{DD}=3.3\text{V}$	1.0	1.4	1.8	mA
Output Load Resistance	R_L	$B=-1000\text{Gs}$	20	–	–	$k\Omega$
Output Voltage Range	$V_{OUT(H)}$	$B=+1000\text{Gs}$	2.45	2.5	–	V
	$V_{OUT(L)}$	$B=-1000\text{Gs}$	–	0.8	0.85	V
Static Output Voltage	$V_{OUT(Q)}$	$B=0\text{Gs}$	1.452	1.65	1.848	V
Linearity	Lin	–	–4	–	4	%
Output Settling Time	–	$B=0\text{Gs}$	–	6	–	μs
Output Noise	–	Bandwidth= 10Hz to 10kHz	–	0.8	–	mV

Note2: The Output Settling Time is the time difference between the establishment and stabilization of the output voltage to the static output voltage.

XL47S Magnetic Characteristics (Note3)

Parameters	Symbol	Test Condition	Min.	Typ.	Max.	Unit
Sensitivity	Sens	$V_{DD}=3.3\text{V}$	2.02	2.3	2.58	mV/Gs

Note3: XL47S is optimized for game handles, with sensitivity corresponding to output voltage in the linear range of 0.8V~2.5V as shown in the table.

Low Power Linear Hall Sensor

XL47S

Output Characteristics

$T_A = 25^\circ\text{C}$, $V_{DD} = 3.3\text{V}$, system parameters test circuit figure1, test methods figure4, unless otherwise specified.

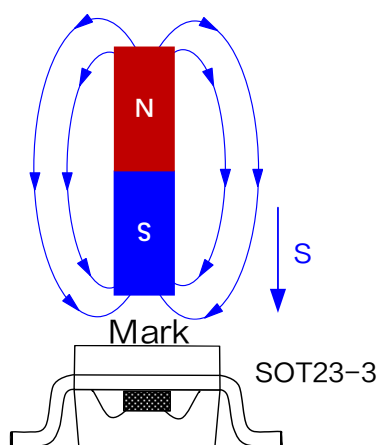


Figure4. Test Schematic of XL47S

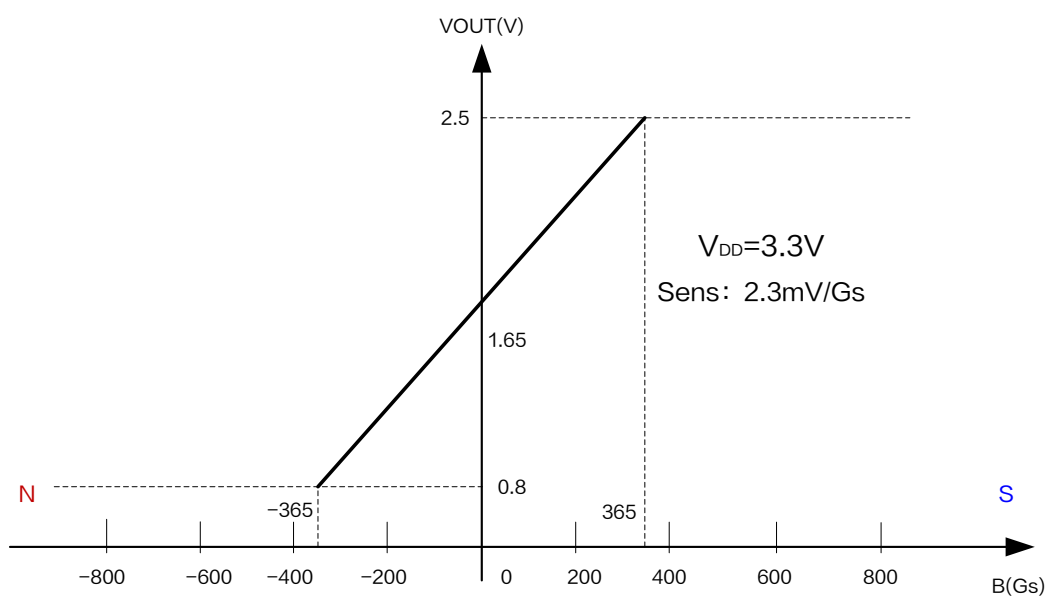


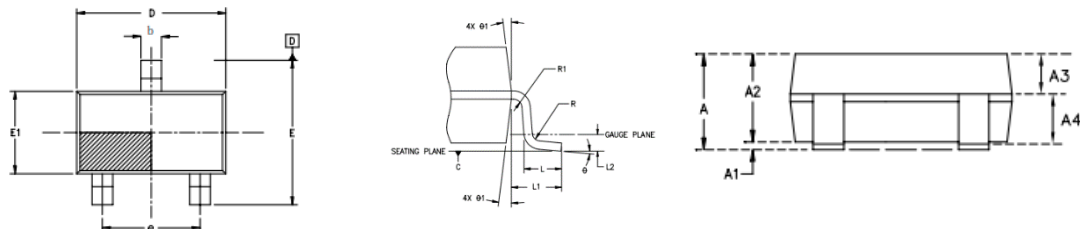
Figure5. Output Characteristic Curve of XL47S

Low Power Linear Hall Sensor

XL47S

Package Information

SOT23-3



Symbol	Dimensions In Millimeters		Dimensions In Inches	
	Min.	Max.	Min.	Max.
A	1.00	1.35	0.039	0.053
A1	0.00	0.15	0.000	0.006
A2	1.00	1.20	0.039	0.047
A3	0.349	0.449	0.014	0.018
A4	0.511	0.701	0.020	0.028
b	0.35	0.45	0.014	0.018
b1	0.32	0.38	0.013	0.015
c	0.14	0.20	0.006	0.008
c1	0.14	0.16	0.006	0.006
D	2.82	3.02	0.111	0.119
E	2.60	3.00	0.102	0.118
E1	1.526	1.726	0.060	0.068
e	1.80	2.00	0.071	0.079
L	0.35	0.60	0.014	0.024
L1	0.6REF.		0.6REF.	
L2	0.25REF.		0.25REF.	
R	0.1	—	0.004	—
R1	0.1	0.25	0.004	0.010
θ	0°	8°	0°	8°
θ1	5°	15°	0°	8°

Low Power Linear Hall Sensor**XL47S****Important Notice**

XLSEMI reserve the right to make modifications, enhancements, improvements, corrections or other changes without notice at any time. XLSEMI does not assume any liability arising out of the application or use of any product described herein; neither does it convey any license under its patent rights, nor the rights of others. XLSEMI assumes no liability for applications assistance or the design of Buyers' products. Buyers are responsible for their products and applications using XLSEMI components. To minimize the risks associated with Buyers' products and applications, Buyers should provide adequate design and operating safeguards. XLSEMI warrants performance of its products to the specifications applicable at the time of sale, in accordance with the warranty in XLSEMI's terms and conditions of sale of semiconductor products. Testing and other quality control techniques are used to the extent XLSEMI deems necessary to support this warranty. Except where mandated by applicable law, testing of all parameters of each component is not necessarily performed.

For the latest product information, go to www.xlsemi.com.